

**TEMPERATURE SENSOR**

**SET100 series**

**WIDE LINE-UP FOR VARIOUS APPLICATIONS**



● **TEMPERATURE MEASUREMENT FOR  
FLUIDS INSIDE PIPING & VESSELS**



● **TEMPERATURE MEASUREMENT FOR  
CORROSIVE FLUIDS INSIDE PIPING &  
VESSELS**



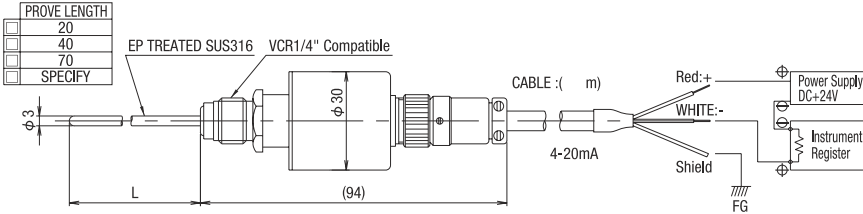
● **TEMPERATURE MEASUREMENT FOR  
FLUIDS INSIDE IGS**

Receiving Instruments & Others

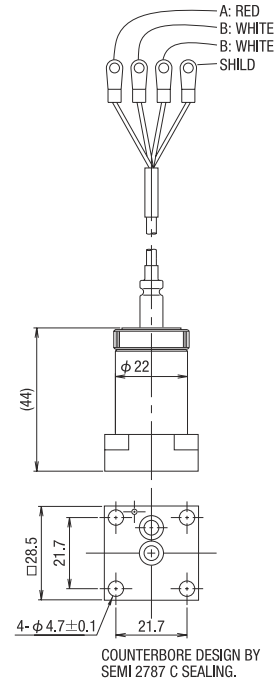
**TEM-TECH LAB. Co.,Ltd**

Contact to: [hello@tem-tech.co.jp](mailto:hello@tem-tech.co.jp)

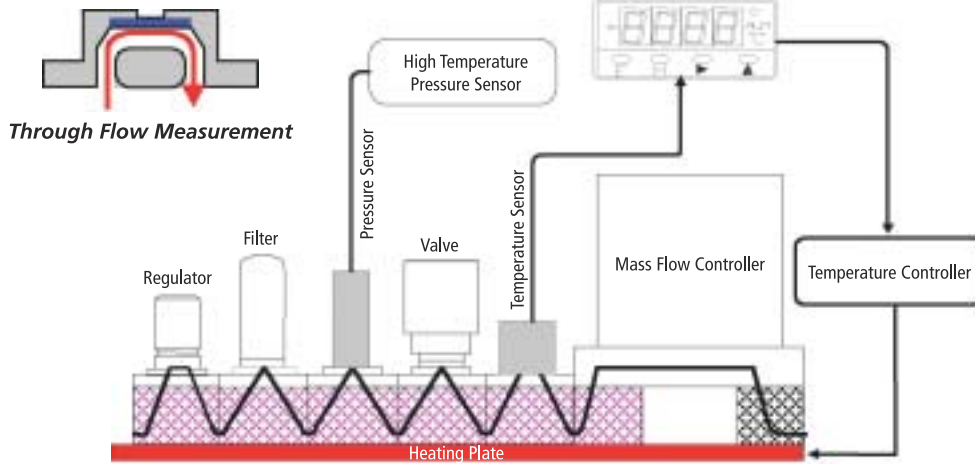
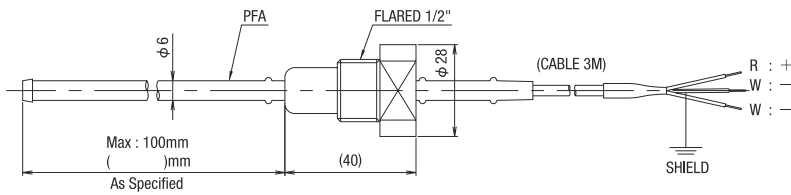
**METAL SENSOR FOR PIPING & VESSEL**  
**MODEL:SET-100MV-420-□□-□□□□**



**METAL SENSOR (FOR IGS)**  
**MODEL:SET-100FI-000-S2-□□□□**



**PFA SHEATHED SENSOR FOR CORROSIVE FLUID**  
**MODEL:SET-100FR-000-□□-□□□□**



Sensor	Pt 100 JIS B Class
Line	3 Wire
Range	0-100°C 0-200°C

*Example of model*

SET100-	Process Connection	Output	Prove Length	Temp. Range
MV	VCR1/4"	000 RTD200 degree C	20 20mm	100 100 degree C
PT	PT1/4"	420 4-20mA	40 40mm	200 200 degree C
FI	IGS C Seal	42X 4-20mA+AMP	70 70mm	
FU	IGS W Seal	15X 1-5V+AMP	S1 IGS 1.5"	
M1	M10	10X 0-10V+AMP	S2 IGS 1.25"	
FR	PFA Cease			