

SE800S Series

High temperature, High & Low
Pressure Sensor



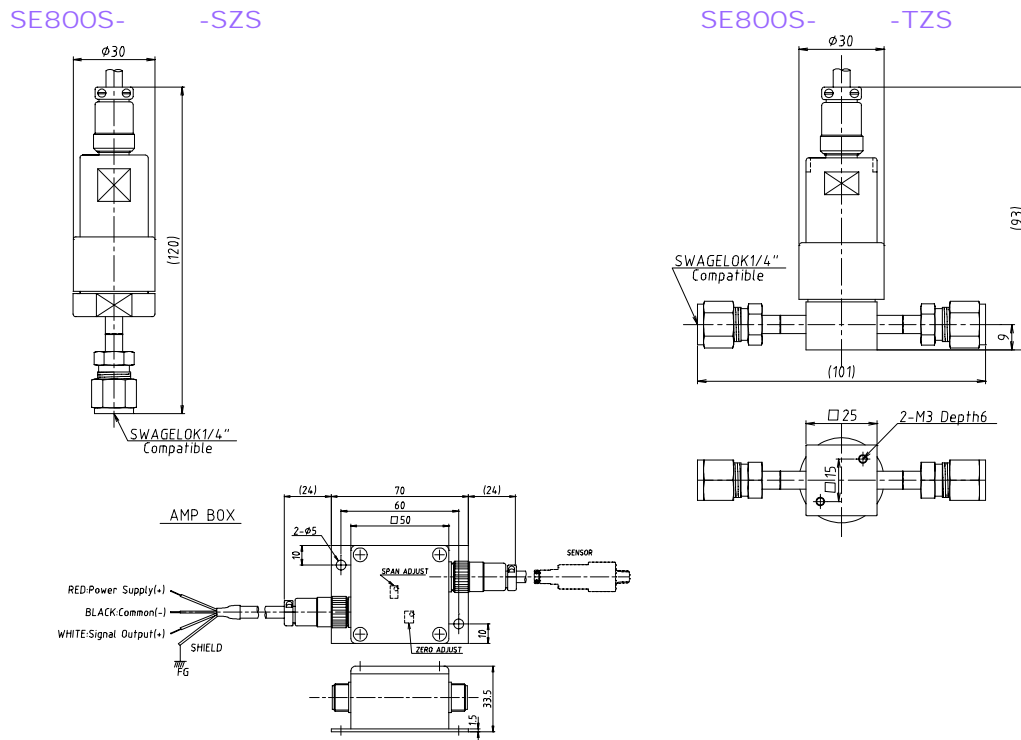
- Applicable for up-to 150 deg. C
- Easy maintenance with remote amplifier
- Ideal for vaporizing system
- Available for wide range from low to high pressure
- Capable of cleanliness treatment

Contact to hello@tem-tech.co.jp

Tem-Tech Lab.

Pressure Sensor for high temperature

2003.8



Application	For high temperature fluids(up-to 150 degree C), w/remote amplifier	
Measurement Range	0(-14.7) to 50, 150, 700, 1500, 3000, 5000, 7000 psi, Other Ranges: refer to factory	
Proof Pressure	Rated pressure x 2	
L.H.R.*1	± 1%F.S	
Output Signal	4-20mA(420)	0-5V(005) , 0-10V(010), 1-5V(105)
Supply Voltage	DC24V	DC15-24V
Operating Temp.	-54 to 150°C	
Thermal Effect	±0.05%FS/°C within operating temp	
Wetted Parts	SUS316L	
Seal Method	Ultra Precision Electron Beam Welding	
Leak Integrity	1 × 10 ⁻⁹ Pam ³ /sec	
Process Connection	¼" Swagelock(Standard), ¼" VCR, Others: refer to factory	
Electrical Connection	Pig tail(Heat-resistant cable)	

note: *1 Linearity, Hysteresis & Repeatability

2. Specify operating temperature when ordering so that the calibration is made at its temperature at factory before shipment.

3. Specifications are subject to change without notice

*Ordering Information (Example: SE800S-420-SMS1)

SE800S	Output	Type	Fitting	Fitting	Fitting Size
	420 : 4-20mA	S : Single Ended	M : Fixed Male	S : Swagelock	1 : 1/4"
	005 : 0-5V	T : Flow Through	N : Swivel Male	V : VCR	2 : 3/8"
	105 : 1-5V		F : Swivel Female	U : UJR	3 : 1/2"
	010 : 0-10V		Z : Others		4 : Others

Contact to hello@tem-tech.co.jp